

PENTECOST SUNDAY

MAY 15, 2016



Christ had promised His Apostles that He would send His Holy Spirit, and, on Pentecost, they were granted the gifts of the Spirit. The Apostles began to preach the Gospel in all of the languages that the Jews who were gathered there spoke, and about 3,000 people were converted and baptized that day. That is why Pentecost is often called “the birthday of the Church.” On this day, with the descent of the Holy Spirit, Christ’s mission is completed and the New Covenant is inaugurated.

~ Scott P. Richert

NEW PRAGUE AREA CATHOLIC COMMUNITY *Three Sites of Worship, One Faith Community*

**Including St. Wenceslaus &
The Western Catholic Community of St. John the Evangelist and St. Scholastica**

215 MAIN STREET EAST ■ NEW PRAGUE, MN 56071 ■ 952-758-3225 ■ NPCATHOLIC.ORG

We welcome you...

Welcome to the greater New Prague Area Catholic Community which includes the Church of St. Wenceslaus and the Western Catholic Community of St. John the Evangelist and St. Scholastica. We are happy you are here. Should you be visiting just for today, WELCOME! If you are seeking a church home, we would be honored to have you consider joining our faith community. If you are interested in a membership, please phone the parish office for assistance and registration. If you are over the age of 21, we ask that you register. Please feel free to stop by the parish office during office hours to register or you may do so online. Again, we are happy you are here.

At the Church of St. Wenceslaus

PARISH OFFICE HOURS

Monday – Friday 8:30 am to 4:00 pm

MASS SCHEDULE

Weekend Masses

Saturday..... 5:00 pm
 Sunday..... 8:30 & 10:30 am

Morning Word & Communion

Monday & Tuesday 8:00 am

Weekday Masses

Wednesday, Thursday & Friday 8:00 am

SACRAMENTS & OTHER INFORMATION

Anointing of the Sick

Available to those who are seriously ill or suffering from a prolonged illness. Call 952-758-3225

Confirmation

Preparation required. Call 952-758-5131

Reconciliation

Saturdays at 4 pm in the church.

Baptism

Preparation required. Call 952-758-3225

Marriage

Six months to one year preparation time required. Call 952-758-3225

Rosary

Monday – Friday 7:30 am & Saturday 8:00 am in the church.

Fatima Prayer Cell

Monday – Wednesday after 8 am service in the chapel.

Adoration

Friday 9:00 am to midnight in the chapel

Early Morning Scripture Study

Wednesday 6:45 to 7:50 am - Pius X Room in church basement.

Fr. Kevin's Bible Study

Saturdays 9:30 to 11 am - Pius X Room in church basement.

Prayer Chain

Judy: 952-758-2220 or Arnita: 952-758-4943

WORKS OF MERCY

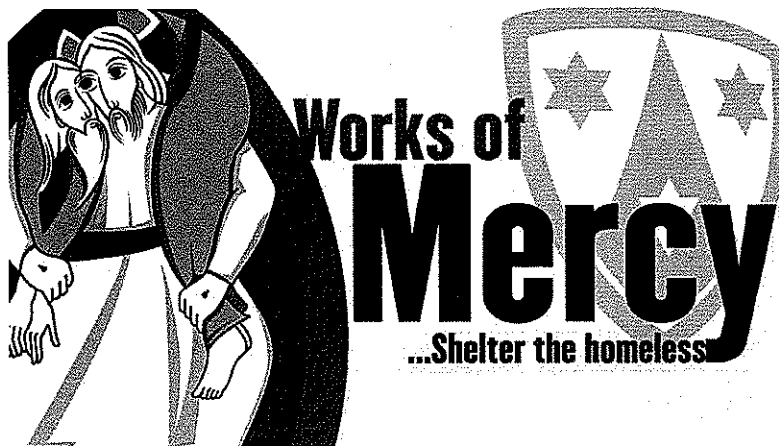
Shelter the Homeless

When I meet our guests at Hope House, I am reminded that; there but for the grace of God go I. It is unthinkable not to have food, my own bed, and the ability to provide a stable home for my children. People find themselves homeless for many reasons; jobless, car problems, house fire, medical emergencies, etc. If they do not have family or friends to assist, they need to rely on groups like Families Moving Forward for temporary assistance.

It is easy to see Jesus within all of these people struggling to survive. I don't believe that anyone would choose this life. How lucky we are that Jesus invites us over and over again to share with those less fortunate than us. Everyone is busy in today's world, but participating in this act of mercy will be a blessing to both you and the families you serve. Whether your time and talents are preparing and serving a meal, helping to give parents some childcare time, lending a listening ear and encouraging smile, or watching over our guests through the night, we all must find the time to act as a disciple of Jesus.

God bless us all.

A Hope House Volunteer



Western Catholic Community

From the Desk of Father Dave

Pentecost and Agriculture

Pentecost is the birthday of the Church and is the primary focus of the day. This year it falls on May 15th which is the feast day of St. Isidore, the patron saint of farmers. While liturgically it should be ignored, I thought some mention of it here and with a Mass-O-Mercial would be acceptable due to our rural nature. The Holy Spirit was truly with St. Isidore and agriculture was part of our church from the beginning. Many of the people in the WCC are dependent on agriculture. Some farm, but many work jobs that contribute to the rural economy. I love the smell of dirt and springtime has always been important to me. We as believers have dominion over the earth to care for creation the best way we know how. There is a great organization called Catholic Rural Life that supports faith in the rural areas of our world. The following are some words they wrote about St. Isidore.

Those whom till the soil, produce crops, husband animals, grow forests, and conserve our God-given natural resources are perfect examples of professions in the modern context, ones that give abundant opportunity for piety and the virtues of a Christian life. These professions unify the human condition and nature, a state which was sanctified by the example of the primitive holy patriarchs seeking seclusion in the desert.

St. Isidore the Farmer, the patron saint of farmers and laborers in many cities and countries around the world whose feast day we celebrate on May 15, exemplifies this truism.

Isidore was a Spanish day laborer in the service of a wealthy landowner, Juan de Vargas, on his farm near Madrid. Born of poor but devout parents, St. Isidore was a simple man of the earth who lived his life in a spiritual relationship with the land he worked. His parents did not have the means to procure learning for him nor a formal education. They did, however, infuse his soul with the valiant ardor for every virtue, especially for prayer. With his humble and prayerful lifestyle, rich in the performance of good works, Isidore did not need books as a source of meditation for his saintliness. He's not alone in this regard; St. Irenaeus tells us that entire nations have believed in Christ and abounded in exemplary believers without knowing how to use ink or paper.

Fr. Dave Barrett
Regional Associate Pastor
New Prague Area Catholic Community

Mass Schedule Volunteers - St. John's & St. Scholastica

MAY 21 & 22, 2016	Saturday St. Scholastica 8:15 PM	Sunday St. Scholastica 8:00 AM	Sunday St. John's 10:00 AM
Lector	Kevin Giesen	Jenna Heimer	Kaylynn Solheid
Eucharistic Ministers	Sandy Kubes	Cindy Jirak, Judy Pauly & Gary Odenthal	Alexis Solheid, Dave Webb & Lori Wooten
Servers	Joseph & Trenton Huebl	Sarah Colwell & Mathew Schoenecker	Danielle, Brenna & Samantha Solheid, Anna Holden
Gift Bearer Family		Judy Hauer Family	Rich Novak Family

Important Information

- Weekend Masses**
 Saturday 8:15 pm St. Scholastica
 Sunday 8:00 am St. Scholastica
 Sunday 10:00 am St. John's
- Weekday Masses**
 Wednesday 5:00 pm St. John's
 Thursday 5:00 pm St. Scholastica

SACRAMENTS & OTHER INFORMATION

- Reconciliation**
 Wednesday 5:30 pm St. John's
 Thursday 5:30 pm St. Scholastica
- Baptism & Confirmation**
 Preparation required. Call Fr. Dave Barrett
- Anointing of the Sick**
 Call Fr. Dave Barrett
- Marriage**
 Prep required. Call Fr. Dave Barrett
- Adoration**
 Fridays 9:00 am to midnight at St. Wenceslaus Daily Chapel

WESTERN CATHOLIC COMMUNITY OFFICE
 20087 Hub Drive, New Prague 56071
 952-758-4642

Rev. Dave Barrett
Regional Associate Pastor
 952-758-0469 (O) 651-470-0970 (C)
 Dave.Barrett@npcatholic.org

Deacon Bob Wagner
Pastoral Associate
 952-758-3225 (O) 612-703-0808 (C)
 Bob.Wagner@npcatholic.org

Faith Formation:
Carol Weiers 952-873-4569

Hall Rental:
Patty Giesen 952-758-3008
 kpgiesen@bevcomm.net

Prayer Chain WCC:
Jackie Henle 952-758-3465
Noreen Giesen 952-758-2608
Marlene Dohmen 952-492-6879

Bulletin E-mail:
info@npcatholic.org
Website: http://www.npcatholic.org

PARISH AND AREA NEWS

New Book Club

A new book club is forming. All parishioners of St. Wenceslaus and the Western Catholic Community are invited to participate. The book club will read and discuss works of fiction with strong Christian/Catholic themes. The actual books to be read and discussed will be determined by the members. Each member will have the opportunity, if they so choose, to lead the discussion on one or more books. For those interested, an organizational meeting will be held on Tues., May 17th at 7 pm in the Parish House. (Please enter through the back door.) If you are interested in the book club but cannot attend the meeting, call David Karan at (952) 461-3067.

Seeking Accompanists!

Are you a closet piano player who is looking for a way to become more involved with church? We need you in our music ministries! We are looking for competent piano players who can accompany a cantor for Masses at any of our church sites. Music is chosen well in advance to allow for practice time and your schedule is very flexible. You will be provided training to understand the logistics involved with accompanying masses. Please contact Debbie Gregor at (952) 758-4207 or through email at Debbie.Gregor@npcatholic.org.

St. Wenceslaus Adult Discussion Group

The Adult Discussion Group will meet at 6 pm at the Parish House (please enter at the back door) on Sun., May 22nd to discuss the "Psalms", their background, composition, use in the Church, and types. The group will also pray, read, and discuss individual Psalms. As always, advance reading is not necessary. Be sure to bring your Bible. Bring a friend. ALL ARE WELCOME — especially newcomers! Hope you can make it. If you would like more information, call Dave or Susan Karan at (952) 461-3067.

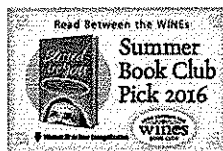


Green Team News:

Thank you, Don and Marlene Mushitz, for donating two Skyline Locust trees for the parking lot landscaping project.

New WINE Book Group

Another new WINE (Women in the New Evangelization) book group is forming to read the book *Blest Are You: Finding Inspiration from our Sisters in Faith*. Dates and times for this small group study will be determined by the participants. This WINE club also offers a virtual book club on their website: catholicvineyard.com. If you are interested in joining this new group, contact the parish office at (952) 758-3225.



Rummage Sale for Hope House

Please save household items, clothing, and furniture that you have been wanting to pass on. A rummage sale to benefit Hope House and Families Moving Forward will be held Aug. 4, 5 and 6. Items will be collected beginning July 28th, location to be determined. Call Audre Johnson for more information at (612) 790-9355.



Hearing Assist Devices

The parish has purchased four new hearing assist devices with a memorial from the Joe Shuster family and other memorial funds. They will be available from the ushers. If users wish to purchase their own earphone, they are \$8. Please contact the parish office for more information at (952) 758-3225.

Catholic Communication Campaign This Weekend

This weekend we will take up the collection for the Catholic Communication Campaign. This collection communicates the Gospel through Catholic social media activities and enriches our faith through television, radio, social media, podcasts, and print media. Please help support this important work. Half of your donation stays in our archdiocese to support local communication needs. Envelopes and more information are located on the table in the back of the church by the front entries.

New Prague Community Blood Drive

When: Wed., May 18th ~ 12-6 pm
 Location: Queen's Court ~ Dining Room, 311 Columbus Ave. N.
 All blood types are needed, especially type O. To make an appointment, please call (952) 257-8190.

Archdiocesan Marriage Day Celebration

Bishop Cozzens invites you to celebrate the beautiful mystery of the mutual self-gift between a man and woman in the Sacrament of Matrimony on Sat., June 4th at the Cathedral of Saint Paul, 10 am for Mass, renewal of vows, and a short reception. Couples celebrating their silver, golden, and platinum anniversaries will be honored in a special way and are invited to attend.

SUPPORT OUR PATRONS
 who make this bulletin possible by their advertising.
 This week we thank
SKLUZACEK CABINETRY & WOODWORKING

Families and friends of all couples are welcome! For more information, call (651) 291-4488 or visit www.archspm.org/events.

Certificates to commemorate the gift of marriage, signed by Archbishop Bernard Hebda are available for couples married one or more years. To receive a certificate, please contact the Office of Marriage, Family & Life at (651) 291-4488 or mfl@archspm.org.

Outdoor Adventures Infused with Theology of the Body Insight:

Dive into the big questions of life ("who are we & why are we here?") through hiking, swimming, campfires, short talks, daily Mass, and time to pray! For full details and registration, go to www.idretreats.org.

2016 I.D. Retreats, led by Jen Messing:

- * **Adults:** Porcupine Mountains, MI, June 13-17
- * **9-12th gr:** Voyageurs National Park, July 11-15
- * **7-8th gr. Girls:** Gooseberry State Park, Aug. 1-5
- * **6-7th gr. Girls:** Jay Cooke State Park, Aug. 8-12
- * **Adults:** Yosemite Nat'l Pk with C. West, Sept. 17-21

Worldwide Marriage Encounter Weekends

"But when he comes, the Spirit of truth, he will guide you to all truth." Let the Spirit of truth bring you to the knowledge of God's plan for your marriage. The next Worldwide Marriage Encounter Weekends are July 15-17, 2016 in Buffalo, MN and Oct. 7-9, 2016 in Buffalo, MN. Early registration is highly recommended. For more information, visit our website at: twincitieswwme.org or contact Brent & Tracy at applications@twincitieswwme.org or (612) 756-8720.



FAITH FORMATION AND YOUTH MINISTRY



3-6 Year Old Worshippers

We are glad you are here. We have a Gospel Bulletin *JUST FOR YOU!* Pick it up on your way into Mass and see the Gospel story as you hear it at Mass.

Last Call for Summer Faith Formation!

If you want your child to participate in grade 1-8 Summer Faith Formation, please turn your form in right away. Summer Faith Formation runs mornings, May 31-June 10; 7:55-12:30.

Vacation Bible School

We are again offering two wonderful camps for your child(ren); June 20-24; 9-noon.

Kids' Camp is for children age 3 ~ grade 3; the theme is *Egypt: Joseph's Journey from Prison to Palace*. We will offer games, songs, Bible Stories, snacks, and crafts. **Sports Camp has an all new and exciting format this year!** We will be joining the Kids' Camp for opening and closing and sharing their theme of the day. We've



got some exciting sports planned ~ like ~ Tae Kwon Do and Ultimate Frisbee! Watch the bulletin for more exciting news! This camp is for children entering 4-6th grades. **Volunteers** are needed at all levels in many different capacities. If you can help one day or all five . . . please sign up! Forms for all of this are available in the back of church or on the parish website.



SCHOOL NEWS from SWS

Think GOLF! - Friday, June 10th

For the avid golfers and the beginners, this outing is so much fun! Join us as a single, a pair, or a foursome. Entry Fee = \$85 per golfer, includes green fees (18 holes), cart, dinner, prizes, and use of driving range before tournament. *Registrations are accepted on a first come, first serve basis and is limited to the first 144 golfers.* We are also seeking Hole Sponsors and Hole-in-One Contest Sponsors. We are in need of prizes and donations too.

WESTERN CATHOLIC COMMUNITY St. John's & St. Scholastica

WCC Graduation Mass

The Western Catholic Community Graduation Masses will be on Sun., May 22nd, at the 8 am and 10 am Masses. Please RSVP to Carol Weiers at (952) 873-4569 if your graduate will be attending this. There will be a breakfast following the 10 am Mass for all graduates and their parents.

WCC Annual Raffle is Coming Soon

The raffle committee is looking for prizes. Anyone who would like to donate a prize to the raffle, please contact Karen Schoenecker at (952) 758-3383, Cindy Jirak at (952) 758-2027, or Linda Bauer at (952) 492-3464. In order to be listed on the raffle ticket, all donations need to be in by May 23rd. Your donation is greatly appreciated!

The Feast of Corpus Christi

Corpus Christi is a prayerful event held at St. John's following the 10 am Mass on May 29th. The faith community joins in as Benediction happens at three outdoor altars and in the Church to end the procession. This is a longstanding, beautiful tradition celebrated at St. John's. Assistance is provided by Catholic United Financial. We hope you can join us!

2016 Western Catholic Community Commitment Drive

I want to offer a big thank you to all who participated in our commitment drive. This was the first year and I would say it was a big success. Summary sheets are available at the entrances of both churches. When we work together, we can accomplish great things. I am so glad we are committed to a strong rural presence in our faith community. May we continue to love Jesus by loving others. Thanks again for taking ownership in our community. ~ Fr. Dave Barrett

POVERTY FOR NO ONE. OPPORTUNITY FOR EVERYONE.

DOROTHY DAY CENTER

The St. Wenceslaus Soup Kitchen committee continues to be grateful for the support that we are receiving from volunteers. This thank you was recently received by St. Wenceslaus from the staff at the Dorothy Day Center.

For over 20 years, St. Wenceslaus has provided a meal to an average of 200 people per month (48,000 meals total).

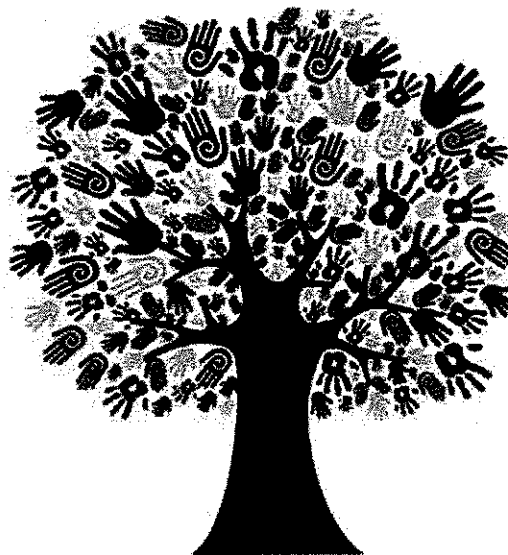
Our annual Soup Supper fundraiser continues to support our monthly grocery needs. (If you are interested in volunteering at the Dorothy Day Center, please contact Norb at 758-3888.)

In 2015 the Dorothy Day Center:

- Served 6,000 people
- Served 300,000 meals
- Had 75,000 shelter stays

Gave access to:

- Veteran's services
- Showers
- Laundry
- Healthcare
- Housing assistance



[Handwritten signature]

"How wonderful it is that nobody need wait a single moment before starting to improve the world."

-ANNE FRANK

[Handwritten signature]

Thank you for generously sharing your time.
We appreciate your volunteer commitment.

[Handwritten signature]

[Handwritten signature]



CATHOLIC CHARITIES
of St. Paul and Minneapolis

[Handwritten signature]

[Handwritten signature]

[Handwritten signature]

LITURGIES & MASS INTENTIONS

INCLUDES ALL CHURCH LOCATIONS
WEEK OF MAY 16-22, 2016

Rosary at St. Wenceslaus
MONDAY – FRIDAY at 7:30 am
SATURDAY at 8:00 am

- Monday, May 16**
8:00 am..... Word & Communion – SW
- Tuesday, May 17**
8:00 am..... Word & Communion – SW
- Wednesday, May 18**
8:00 am..... Mary Lisa Kajer Cross – SWS Mass – SW
5:00 pm..... Joe & Marcella Koenig – Mass – SJ
5:30 pm..... Confessions – SJ
- Thursday, May 19**
8:00 am..... Word & Communion – SW
5:00 pm..... Mass – SS
5:30 pm..... Confessions – SS
- Friday, May 20**
8:00 am..... Mass – SW
- Saturday, May 21**
4:00 pm..... Confessions – SW
5:00 pm..... Daniel Soucek, Joe Shuster
..... JoAnn Wermerskirchen Simon – Mass – SW
8:15 pm..... Mass – SS
- Sunday, May 22**
8:00 am..... Mass – SS
8:30 am..... Babe Pumper, Julia E. Tupy,
..... Urban & Alice Deutsch – Mass – SW
10:00 am..... Clara Giesen – Mass – SJ
10:30 am..... Mass – SW

STAFF DIRECTORY NEW PRAGUE AREA CATHOLIC COMMUNITY

- Rev. Kevin Clinton**
Pastor
952-758-3225
Kevin.Clinton@npcatholic.org
- Rev. Dave Barrett**
Regional Associate Pastor
952-758-0469
Dave.Barrett@npcatholic.org
- Deacon Bob Wagner**
Pastoral Associate
952-758-0463
Bob.Wagner@npcatholic.org
- Mary Higgins**
Pastoral Ministry Associate
952-758-0464
Mary.Higgins@npcatholic.org
- Peter Guzulaitis**
Parish Business Administrator
952-758-0465
Peter.Guzulaitis@npcatholic.org
- Ruth Weinandt**
Parish Accountant
952-758-0466
Faith Formation Assistant
952-758-0486
Ruth.Weinandt@npcatholic.org
- Laura Schoenecker**
Faith Formation Director
Pre-K through Adult
952-758-5131
Laura.Schoenecker@npcatholic.org

- Kim Doyle**
St. Wenceslaus School Principal
952-758-3133
Kim.Doyle@swsaints.org
- Jodi Chromy**
Preschool Director
952-758-0480
Jodi.Chromy@swsaints.org
- Debbie Gregor**
Director of Liturgical Music at SW
952-758-4207
Debbie.Gregor@npcatholic.org
- Lisa Levenson**
Parish Administrative Assistant
952-758-3225
Lisa.Leverson@npcatholic.org

- PARISH BUSINESS OFFICE**
215 Main St E, New Prague, MN 56071
PH 952-758-3225 FAX 952-758-2960
- FAITH FORMATION OFFICE**
On campus in Parish Activity Center
- ST. WENCESLAUS SCHOOL**
227 Main St E, New Prague, MN 56071
PH 952-758-3133 FAX 952-758-2958
- LITTLE SPIRITS PRESCHOOL**
On campus of SWS ~ 1950's building
952-758-0480
- MAINTENANCE DEPARTMENT**
952-758-2327

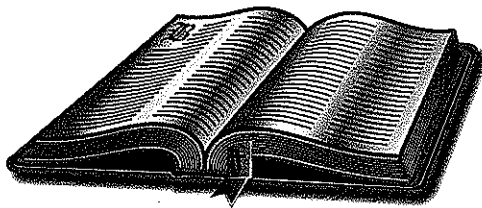
ST. WENCESLAUS MEETINGS & EVENTS CALENDAR

WEEK OF MAY 16-22, 2016

- Monday, May 16:**
No Events
- Tuesday, May 17:**
SWS Talent Show, 12:30 pm – Parish Activities Center
SWS Talent Show, 7 pm – PAC
NPACC Book Club, 7 pm – Parish Office Dining Room
- Wednesday, May 18:**
Early Morning Scripture Study, 6:45-7:50 am – Pius X Room, CB
Children's Choir I & II Rehearsal – Music Room
Schola Choir Rehearsal – Music Room
Youth Choir Rehearsal – Music Room
Adult Bells & Choir Rehearsal – Music Room
- Thursday, May 19:**
Teen Choir Rehearsal, 2 pm – Music Room
- Friday, May 20:**
Adoration, 9 am-midnight – Chapel, PAC
Marriage Encounter Meeting, 7 pm – Parish Office
- Saturday, May 21:**
Adult Scripture Study, 9:30-11 am – Pius X Room, CB
Potluck, 6-7 pm – Church Basement
Pentecost Prayer Vigil, 7-8 pm – Church
- Sunday, May 22:**
Sunday School during 10:30 am Mass – PAC
Adult Discussion Group, 6 pm – Parish Office Dining Room
Young Catholic Families Book Club, 7 pm – Chapel, PAC

SCRIPTURE READINGS

WEEK OF MAY 16-22, 2016

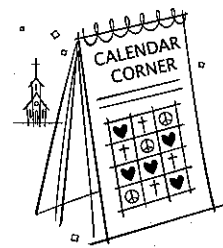


- Monday, May 16:**
JAS 3:13-18 / MK 9:14-29
- Tuesday, May 17:**
JAS 4:1-10 / MK 9:30-37
- Wednesday, May 18:**
JAS 4:13-17 / MK 9:38-40
- Thursday, May 19:**
JAS 5:1-6 / MK 9:41-50
- Friday, May 20:**
JAS 5:9-12 / MK 10:1-12
- Saturday, May 21:**
JAS 5:13-20 / MK 10:13-16
- Sunday, May 22:**
PRV 8:22-31 / ROM 5:1-5/ JN 16:12-15

ST. WENCESLAUS CALENDAR CORNER

Thank you to the Following Sponsors:
Steve Skluzacek Construction, Inc.,
Strike Force Bowl and ProShop
& Busch Bros. Machining

- | | | |
|------|-------|-------------------------|
| 5/8 | #2593 | Gerald & Carol Williams |
| 5/9 | #0644 | John & Connie Geis |
| 5/10 | #0546 | Beverly Farnquist |
| 5/11 | #2091 | Veda Sirek |
| 5/12 | #1833 | Denise Rynda |
| 5/13 | #2492 | Harry VonBank |
| 5/14 | #2390 | Darleen Tupy |



Patty's Place
 • Specialty Coffees
 • Fresh Pastries
 • Hand Dipped Ice Cream
 • Cake Decorating
 108 E Main Street #1 New Prague
 952-758-5808 Open 7 Days A Week

NPCL
 (New Prague-Coska-Louisville)
Mutual Insurance Company
 205 County Road 37
 New Prague, MN 56071
952-758-5964
 www.npclinsurance.com
Competitive Rates for Farm & Home
133 Years of Service
 1882-2015

SKLUZACEK
 Cabinetry & Woodworking
 Dave Skluzacek • 612-986-8443
 New Prague, MN

STATE BANK OF NEW PRAGUE
 1101 1st Street SE • 952-758-4491
 statebankofnewprague.com
 MEMBER FDIC

NEW PRAGUE FAMILY & SPORTS CHIROPRACTIC CENTER
 Dr. Mike Kilpatrick
 952-758-4121

Jon P. Colling, D.D.S.
Thomas W. Smyth, D.D.S.
 GENERAL DENTISTRY & ORTHODONTICS
 newpraguedentist.com
 OFFICE HOURS MON-FRI
 NEW LOCATION!
 211 Cty. Rd. 37 New Prague 952-758-2376

RYNDA'S PLUMBING
 Bruce Rynda
 Plumbing • Water Softeners
 Water Heaters
 128 West Main St., New Prague
 952-758-3242

Edina Realty Pat Sullivan REALTOR®
 Cell 952.457.0479
 Office 952.758.4112
 138 Main St. W, New Prague, MN
 patsullivan@edinarealty.com
 www.edinarealty.com/pat-sullivan-realtor

BACK and NECK CLINIC of NEW PRAGUE
 Dr. Laurie A. Reiner Hughes
 Dr. Jeremy Tupy
 DOCTORS OF CHIROPRACTIC
 Located across from The New Prague Times
 201 East Main Street 952-758-5135

Bruzek FUNERAL HOME
 Serving With Compassion Since 1903
 Steve and Mary Frost
 Cremation & Funeral Planning
 952-758-4949

NEW PRAGUE AUTO REPAIR
 www.NewPragueAutoRepair.com
 Since 1974 Gary Kohoutek, Owner
 952-758-4471
 205 4th Ave. SW
 New Prague, MN 56071

New Prague "Gentle Dental Care"
Dr. Gregory R. Dvorak, D.D.S.
 Cosmetic & Sedation Dentistry
 136 West Main Street, New Prague
 952-758-3003 • www.drdivorak.com

BENDZICK MINI STORAGE
 Brand New Storage Facility
 Excellent Secure Location 1 Mile
 North of New Prague on Hwy. 21
507-334-3422

Kneip & Associates INSURANCE
 medical dental life
Daniel Kneip 952-758-3049
 kneip.ins@gmail.com
 Committed to product understanding and personal service.

Ambroz Plumbing, Inc.
 Paul Ambroz
 New Construction - Remodel - Service
 952-758-6265 • Cell 952-292-4413
 Lic# 059407-PM

JKUBES Custom Cabinets
 Wencil Kubes
 New Prague
 952-758-2262

South Suburban Oral Surgeons
 Dr. Mark T. Roszkowski
 Dr. Richard T. Pihstrom
 115 1st Avenue SE, #110,
 New Prague, MN
 952-758-2321

STEENI TUPY REALTOR®
 952-486-3082
 www.stefitupy.com
 Edina Realty
 StefeniTupy@EdinaRealty.com

NEW PRAGUE MINI STORAGE, INC.
 From 5x10 thru 10x40. Climate Controlled. Now Available.
 Easy access, 7 days a week, 24 hours a day
 www.NewPragueMiniStorage.com
952-758-7819

MACH LUMBER
 Paul Kratochvil, Owner
 Convenient - We Deliver!
 952-758-3235
 M-F 7-5; Sat. 8-Noon
 201 Second Ave. SW, New Prague
 1 block S of Main St, across from ConAgra

TUPY INSURANCE AGENCY, INC.
 For Your Personal or Business Insurance Needs
 We are here to Serve You!
 111 East Main Street
 New Prague, MN
952-758-2433

STRIKE FORCE BOWL and ProShop
 309 W. Main St., New Prague, MN 952-758-5170

SAXE CHEVROLET BUICK
 Matt Saxe
 909 Enterprise Drive
 Belle Plaine, MN 56011
952-873-2234
 www.saxechevy.com

Odenthal Landscaping
 Retaining Walls, Patios & Much More
 For All Your Landscaping Needs
 New Prague, MN
 www.odenthallandscaping.com
 Phone & Fax: 507-364-5460 Cell: 612-703-4803

KUBES REALTY
 115 1st Ave. SE
 New Prague
952.758.9110
 www.KubesRealty.com

YOU CALL... WE HAUL...
 Complete Household Transfer
 Licensed • Bonded
 Reasonable Rates
 TIM or JOHN
 952-758-2552
 16264 310 St.
 New Prague

Marlene Mushitz, CRS, GRI, CDPE
 1301 1st St. NE
 New Prague
 612-978-2222
 RE/MAX www.DynamicMarlene.com

Wacker Drywall, Inc.
 Hand Troweled Ceilings
Roger Wacker
 Home: 952-758-8726
 Cell: 612-978-9648
 New Prague

DOUG VAYDA
 Specialist in the practice of Orthodontics
 101 Central Ave.
 New Prague
 952-758-6999

MALA STRANA REHABILITATION CENTER & Assisted Living
 New Prague • 952-758-2511

Suel Printing Company
 Pleased to be the printers of your Parish Bulletin.
 200 Main St. East, New Prague
 952-758-4435
 awann@suelprinting.com

AMERICAN FAMILY INSURANCE
 Melissa Kreuser, Agent
 American Family Mutual Insurance Company and the Subsidiaries
 American Family Insurance Company
 Home Office - Madison, WI 53783
 New Prague
 (952) 758-5460
 1301 1st St. NE
 New Prague
 mkreuser@amfam.com

New Prague Dental Center
 "Dental care for the entire family"
 Kathleen J. Garry, D.D.S.
 Jeremy Derksen, D.D.S.
 101 Lexington Ave. So. 952-758-4741

Roundbank
 New Prague: 952-758-BANK (2265), 1100 1st St. NE
 Farmington: 651-463-8300, 3380 Vermillion River Tr.
 Member FDIC www.roundbank.com

Investment Solutions
 New Prague: 952-758-PLAN (7526), 1100 1st St. NE
 Farmington: 651-463-8300, 3380 Vermillion River Tr.
 www.investmentsolutionsmn.com

Knights of Columbus INSURANCE
 Whole Life • Term • Retirement • Annuities
 Pension/401K Rollovers • Long Term Care
 Roth IRA's • Disability Income LTD.
T.W. Schlag
 Field Agent
507-417-4169, Ext. 10
 email: thomas.schlag@KofC.org

SKLUZACEK CONSTRUCTION, INC.
 Steve Skluzacek,
 Owner #0004897
952-758-4158

NEW PRAGUE VETERINARY CLINIC
 Dr. William F. Vollmar
 Boarding Services
 1003 East Main St.
 New Prague, MN
 952-758-2881

Your Name Here
 For Only
\$7.25/week

UHELECTRIC
KEVIN GIESEN
 License # EA674110
 Cell: 612-328-7206
 uhelectric@gmail.com
 27946 Church Avenue, New Prague

Michael Traxler
 WEALTH MANAGEMENT, LLC
 Investments & Financial Planning Solutions
 Security & Advisory Services offered through Nations Financial Group, Inc. Member FINRA & SIPC. A Registered Investment Advisor.
Michael P. Traxler
 Financial Advisor
 222 Main Street East
 New Prague, MN 56071
952-758-8060